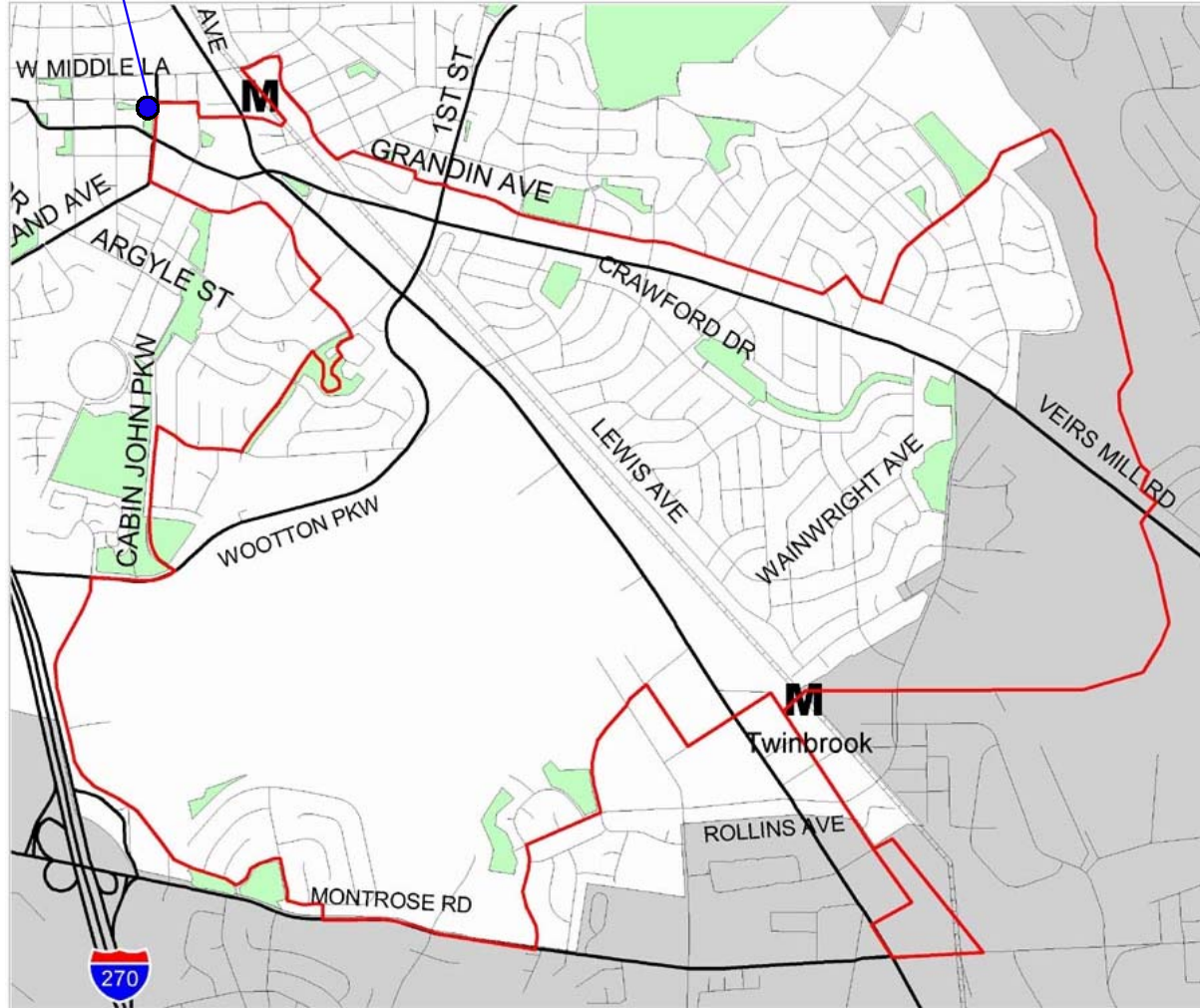




## Tour Map



## PEERLESS ROCKVILLE

...exploring & experiencing  
Rockville's history & places

## *Bicycle Tour of Historic Rockville*

### TOUR # 4:

*Former Fairgrounds  
Dawson Farm  
Hungerford  
Congressional  
Montrose School  
Parklawn Cemetery  
Twinbrook  
Rockville Park  
B&O Station Historic District*

(Distance ≈ 14 mile loop)



HISTORIC PRESERVATION LTD

P. O. Box 4262  
Rockville, MD 20849

T: 301.762.0096  
F: 301.762.0961  
E: info@peerlessrockville.org

*Peerless Rockville safeguards and promotes Rockville's past by preserving buildings, spaces, objects, and information important to our city's heritage. Peerless Rockville advances its goals through education, example, advocacy, and community involvement.*



HISTORIC PRESERVATION LTD

*In the historic Red Brick Courthouse  
29 Courthouse Square, Rockville Town Center*

[www.peerlessrockville.org](http://www.peerlessrockville.org)

## Welcome to historic Rockville



Red Brick  
Courthouse

Designated as the seat of Montgomery County in 1776, known as Rockville by 1803, and incorporated in 1860, Rockville today includes residences, commercial and public buildings, and other places that represent more than 200 years of history.

For more detailed information about sites and neighborhoods on this tour, we recommend that you take along one of several guidebooks available from Peerless Rockville in the Red Brick Courthouse. Please use caution as you bicycle on city streets and trails. *Enjoy your ride!*

### Courthouse Square

The area known as Courthouse Square been a gathering spot for more than 250 years. Suburban expansion of Montgomery County spurred the construction of the Red Brick Courthouse in 1891. This grand building once housed the County Commissioners, Circuit Court, Orphan's Court and other county agencies, and was surrounded by hotels and other businesses that served people visiting the county seat.

### Montgomery County Fairgrounds

Before being purchased at auction by the Board of Education, the land where Richard Montgomery and Park Street Schools now stand was used as the Montgomery County Fairgrounds. From 1846 to 1932, the County Fair was held here for one week in August or September, eventually becoming a victim of the Depression and a ban on horse betting. Bike the driveway along the east side of Park Street School to where the Grandstand stood facing east to the oval (now the high school track).

### Dawson Farm

The 1874 Gothic-style farmhouse and the 1913 Prairie-style house on Copperstone Court are associated with a prominent Rockville family that operated a farm here known as "Rocky Glen." Union and Confederate troops camped and skirmished here during the Civil War. Note the remnants of outbuildings as you ride through the park. Today, the former 500 acre Dawson farm includes schools, parks, and the Hungerford neighborhood.

### Hungerford Neighborhood

Predominantly moderate-sized single family houses constructed in the 1950s and early 1960s, Hungerford has a proud tradition of integration. The first residents were mostly white families of war veterans. In 1957, the NAACP targeted the neighborhood in its "block busting" initiative and the first minority family moved in on Brice Road. A resolution was proposed for the community pool to limit membership to Caucasians. A large turn-out appeared at the next pool organization meeting and voted *against* this resolution by a margin of 95 to 5.

### Congressional: Airport to Shopping Center

From the late 1920s to the early 1950s, Congressional Airport flourished as a private airfield with a flying school, restaurant, demonstrations, and races. The post-World War II population boom, auto-oriented suburbanization, and increased consumer demand propelled the development of a large retail complex on the airport site.

### Montrose School

Opened in 1909, this two-room schoolhouse served area students until 1966. At the time the school opened, the tiny community of Montrose was surrounded by family farms. Peerless Rockville purchased the abandoned building in 1979, restoring and adapting it for modern use.

### Wilkins Estate

In 1923, on land now used for Parklawn Cemetery, architect John Russell Pope designed a grand Classical Revival stone house as a summer place for John F. Wilkins, publisher of *The Washington Post*. A stone gatehouse located on the Rockville Pike led to a road across stone bridges and streams to the mansion, which is now used as offices for the cemetery.

### Twinbrook

After WWII, returning veterans bought starter homes in new, large developments along one of Washington's hottest suburban corridors. Settling into split levels, colonials, and ramblers along streets named for military heroes and battles, the new residents of Twinbrook Forest and Twinbrook (to the south of Veirs Mill Rd) were part of a major population boom. No longer a small town, post-WWII Rockville experienced major changes in its physical landscape, government, and civic life.

### Rockville Park

From 1873, when the B&O Railroad opened to provide easy access from Rockville to Washington, speculators and developers bought local farmland to subdivide into building lots. One of these, wealthy Washington lumber and coal merchant William Reading, purchased 30 acres east of the B&O tracks in 1884 and began to sell lots in "Reading's Addition." Attractive country building lots close to the railroad line sold quickly.

### B&O Station/Wire Hardware/Saint Mary's Chapel

Rescued by Peerless Rockville, the 1873 B&O Station and 1895 Wire Hardware building, along with nearby 1817 Saint Mary's Chapel, are historic landmarks that have been successfully adapted for modern use. Author F. Scott Fitzgerald and wife Zelda are buried in the family plot in Saint Mary's Cemetery.

### Urban Renewal in Rockville

In an effort to revitalize a decaying downtown, Rockville became the first city in Maryland to take advantage of federal funds for Urban Renewal. Forty-seven acres were redeveloped and traffic patterns changed. New apartment and office buildings, the County Government complex, and the now-demolished Rockville Mall changed the scale and density of Town Center.

## CUE SHEET

START at Red Brick Courthouse, 29 Courthouse Square  
CROSS Maryland Avenue, continue EAST on Fleet Street  
**STOP #1: Montgomery County Fairgrounds/Park Street School/RMHS**  
RIGHT on Mt. Vernon Place  
LEFT on Jefferson Street  
CROSS Ritchie Parkway to Copperstone Court  
**STOP #2: Dawson Farm**  
RIGHT into Dawson Farm Park along path between houses  
CIRCLE around Dawson Farm Park to LEFT on Ritchie Parkway  
RIGHT on Edmonston Drive  
LEFT on Cabin John Parkway  
RIGHT on Wootton Parkway  
LEFT on Tower Oaks Blvd.  
LEFT on North Farm Lane  
LEFT on Farm Pond Lane  
RIGHT on Farm Haven Drive  
LEFT on Montrose Road (ride on sidewalk on NORTH side of Montrose Road)  
LEFT on Evelyn Drive  
RIGHT on Rollins Avenue  
LEFT on Congressional Lane  
**STOP #3: Former Congressional Airport (now Plaza)**  
RIGHT into Congressional Plaza, through to Halpine Road  
LEFT on Halpine Road  
CROSS Rockville Pike at traffic signal  
RIGHT on Chapman Avenue  
SOUTH on Chapman Avenue to Montrose Crossing Shopping Center  
ENTER Montrose Crossing Shopping Center, follow driveway in front of stores.  
RIGHT at driveway in front of Old Navy, ride toward Rockville Pike  
LEFT on path on EAST side of Rockville Pike  
LEFT on Randolph Road (stay on sidewalk on NORTH side of Randolph Road)  
**STOP #4: Montrose School**  
Continue EAST on Randolph Road  
LEFT into Montrose Crossing Shopping Center; through center to Chapman Ave.  
NORTH on Chapman Avenue to Twinbrook Metro Station  
WALK bike through Twinbrook Metro Station (use ramp) to EAST side of station  
CROSS Twinbrook Parkway at Fisher's Lane  
FOLLOW Fisher's Lane to end.  
ENTER Parklawn Cemetery from the southwest  
**STOP #5: Wilkins Estate** (Mansion is on high ground of Parklawn Cemetery)  
EXIT Parklawn Cemetery via driveway at the northeast end of property  
Before Veirs Mill Road, turn LEFT on to Rock Creek Trail  
NORTH along Rock Creek Trail (the tour route follows Rock Creek Trail for approx. 3 miles) CROSS Veirs Mill Road at Aspen Hill Road. Follow green Bicycle Route signs (LEFT on Adrian Street, RIGHT on Baltic Avenue).  
Continue on Rock Creek Trail by turning LEFT into Aspen Hill Park  
EXIT Rock Creek Trail by crossing creek to the LEFT to get to path leading to Marcia Lane / Linthicum Street  
CROSS Twinbrook Parkway at Linthicum Street, continue on Linthicum  
RIGHT on McAulliffe Drive  
LEFT on Patton Place  
RIGHT on Grandin Avenue  
CROSS First Street at Grandin Avenue  
LEFT on Reading Avenue  
RIGHT on South Stonestreet Avenue  
LEFT into Rockville Metro Station  
Ride around to WEST side of Rockville Metro Station (use sidewalks with caution)  
LEFT on Park Road, LEFT into Metro Station, LEFT onto Church Street  
**STOP # 6: B&O Station / Wire Hardware / St. Mary's Church**  
CROSS Rockville Pike at Church Street  
RIGHT on Monroe Street  
LEFT on East Montgomery Avenue to Red Brick Courthouse